

# BURNLEY F.C.

SEASON 1968/9

6<sup>d</sup>

Official Programme



Burnley v Wolves—Frank Casper scores for Burnley

Photo: 'Burnley Express



F.A. Cup Winners 1913-14

League Champions Div. I 1920-21, 1959-60

League Champions Div. II 1897-98

League Champions Central League 1948-49, 1961-62, 1962-63

Lancashire Senior Cup Winners 1889, 1915, 1950, 1952, 1960, 1961, 1962, 1965, 1966

Record number of 30 consecutive 1st Division League games without defeat 1920-21

F.A. Cup Finalists 1946-47, 1961-62

Runners-up 1919-20, 1961-62

Runners-up 1912-13, 1946-47

No. 14 Swindon Town 20 Nov. '68



**RIBBLESDALE  
LUXURY MOTOR COACH TOURS**

Departures from

Colne, Nelson, Burnley, Accrington,  
Blackburn and other Lancashire Towns

Swiss Lakes      Dolomites and Venice  
Austrian Tyrol    Rome, Bay of Naples  
Scotland, Ireland, Wales, Bournemouth  
Torquay, Newquay, Great Yarmouth

Five to Fourteen Days Fully Inclusive Tours

Free Illustrated Brochure from your  
local Travel Agency or Head Office:

GEORGE ST. WEST, BLACKBURN    Tel. 57311

**SPACE RESERVED  
BY**

**TUFMIX  
READY CONCRETE  
LTD.**

*For a MEAL or SNACK in town*

**THE OLYMPUS GRILL AND COFFEE BAR  
PALACE THEATRE ST. JAMES' STREET, BURNLEY**

Also at UNION STREET, ACCRINGTON

**OPEN 7 DAYS A WEEK 8 a.m. - 10 p.m.**

**TELEPHONE: BURNLEY 23323**

**GOOD FOOD - OUR AIM - YOUR SATISFACTION**

**Programmes 3/6**  
**Programmes 7/6**  
**Programmes 10/6**

**SEND REMITTANCE WITH ORDER TO :  
BUSINESS TRADE ADVISORY SERVICE LTD  
P.O. BOX 17, EDGWARE, MIDDX.**



# Burnley Football & Athletic Co. Ltd.

Chairman R. W. LORD, Esq.

Directors: F. HARTLEY, Esq., Dr. R. D. IVEN, R. BOOTHMAN, Esq., R. HARGREAVES, Esq.

Manager: HARRY POTTS

Secretary: ALBERT MADDOX

Ground and Registered Office: Turf Moor, Burnley

The winning programme number will be announced over the loudspeaker at half-time. The winner should call at the office after the match to collect the prize of **FIVE POUNDS** and the option of purchasing one **GROUND CUP FINAL TICKET**.

Nº 4014

No. 14

WEDNESDAY, 20 NOVEMBER, 1968

**HARRY  
POTTS**

*Calling*



It is with interest and warm greetings that we welcome our tonight's visitors, Swindon Town, in the first leg game of the Football League Challenge Cup semi-final.

The story of Swindon Town, it has been claimed, is practically the story of football South of the Thames. Be that as it may, the indisputable fact is that the Wiltshire club has had a most notorious career with many outstanding achievements, especially having regard to the fact that it has not yet had the privilege of figuring in the First Division of the Football League. It has, of course, enjoyed Second Division status and is now making a strong bid to regain it, having a statistical advantage over its chief

contenders for promotion from Division Three.

The club was founded in 1881 by a clergyman, the Rev. W. Pitt, as an amateur organisation and turned to the engagement of professionals in 1894. It is one of the foundation members of the Southern League's first division when that competition was introduced, and later became one of the founder clubs when the Football League launched its Third Division.

Meanwhile its fortunes had been mixed. In that initial season of the Southern League it finished at the foot of the table, but had continuity, along with Millwall and Southampton, of Southern League football from 1894 to 1920, when it assumed Football League status at the formation of the Third Division of that competition as one of the Third Division (South) member clubs.

It has, of course, a renowned record by its deeds in the Football Association Challenge Cup competition, to which it had its introduction as long ago as season 1907-08. In that first venture in that company it reached the Third Round, and only three years later staggered the "Big Boys" and a lot of others by reaching the semi-finals, losing to Newcastle United, the ultimate winners, at Tottenham.

Another two years went by and Swindon were at the corresponding stage again, this time losing to Barnsley in a replay.

During their association with the Football League they have been obliged to seek re-election on three occasions, in the years 1933, 1956 and 1957. Five times they reached the fourth position in the table, and finally



## **R. RAWCLIFFE**

**LIMITED**

**CALDER CONSTRUCTORS'  
MATERIALS LIMITED**

**COAL STAITHE GARAGE  
READ · Near BURNLEY**

Telephone : Gt. Harwood 2369

For Hire or Contract:

Caterpillar Traxcavators  
for Excavating, Levelling, Dozing  
and Site Clearance, etc.

also Loading Shovels  
for Stacking Coal, Coke, etc.  
Demolition and Loading all  
Loose Materials.

---

Delivered on Site:

Stone, Pitching, Brick, Hardcore,  
Ashes.

All Bulk Building Materials.

Tipping Wagons for Day Work  
and Site Work.

---

**WASTE CLEARING**

## **BURNLEY MACHINE TOOL COMPANY LIMITED**

Engineers and Merchants

Distributors of  
High-class Machine Tools

Buyers of Surplus Machinery

**38 BARDEN LANE · BURNLEY**

Telephone 27075



Telephone  
Rossendale  
4 8 6 8



Proprietor: G. DALE

**BOUNDARY GARAGE  
LOVECLOUGH ROSSENDALE**

Greasing and General Servicing; Tyres, Oils,  
Accessories, Insurance Work and Motor  
Body Repairs — Cellulose Spraying

**ROBERT WALKER & SON (M/c.) LTD.  
VIADUCT WORKS, KNOTTS LANE, COLNE**

*For Your*

**STRUCTURAL STEEL CHEC PLATES HANDRAILING  
STANDARDS AND WELDED FABRICATIONS**



secured promotion to the Second Division in season 1962-63, holding runners-up position to Division Three title winners.

They made an outstanding start in their new 1963-64 season, when they set up a record for a newly promoted club, going nine games before meeting with defeat. That great start was not maintained subsequently, and the following season still found them struggling and finally relegated. Now they appear to be well established for their aim to get back into the higher circle once more.

Swindon's F.A. Cup exploits have, of course, been its chief publicity factor. It has reached the fourth round nine times, the fifth round four times and the sixth round once, in addition to the two semi-final appearances already cited. And on the course it has pulled off many shock victories.

Originally their headquarters were The Croft, but they moved to the county ground in 1896 and have remained there without interruption, even during war time, since then. Its capacity is understood to be fixed at 30,000. At a cup-tie with Burnley in 1929 was set up the pre-war record attendance of 24,730, a figure surpassed in a cup-tie with West Ham in 1964, when the figure was 28,582.

Not surprisingly, with so long a history of professional players, many outstanding footballers have been connected with the club.

Perhaps the best known was Harold Fleming, an attractive and dangerous inside forward, capped nine times for England, and Granville Morris, capped nine times for Scotland. Others of renown were Harry Kay, J. Holden, S. Lamb and F. Richardson, and in more recent years Billy Lucas, a Welsh international, Norman Uprichard, Irish international, Mike Summerbee (England) and Ernie Hunt (Under-23 international) occur readily to mind.

In the present side is Thomas, capped by Wales, and Don Rogers, who has played for the England Under-23's and has been so much in the focus of the leading club scouts for some time.

Their chairman is Mr. W. J. Castle, and manager Danny Williams, ex-Rotherham player and manager.

Referee tonight is Mr. E. Jennings of Stourbridge. He was appointed to the Football League list in 1954. Previously he officiated in the Birmingham League. Aged 45, he was in charge of the 1967 F.A. Amateur Cup Final at Wembley, and has refereed Full and Under-23 internationals. He is also on the F.I.F.A. panel. He played in Birmingham junior football and also for the R.A.F. before taking up refereeing. A married man with two daughters, his professional occupation is that of technical representative for a water treatment company. Among his recreational interests are cricket and fishing.

## DO YOU KNOW? LAWS QUIZ

1. If a player, who has taken a goal-kick properly, intentionally plays the ball with his hand when the ball has left the penalty-area but before it has been touched by another player, what is the decision?
2. What action should the referee take if, at the taking of a penalty-kick, the ball strikes the goal-post and/or cross-bar and bursts?
3. If a defender, whilst standing in his own penalty-area, strikes an opponent while the ball is in play in the opponents' penalty-area, should the referee award a penalty-kick?
4. If a goalkeeper, who has changed places with one of his colleagues without notifying the referee, handles the ball inside the penalty-area, what action should the referee take?

1. A direct free-kick should be awarded to the other side.
2. He should ask for another ball and restart the game by dropping the ball. (If the penalty-kick is being taken in extended time and the ball strikes the goal-post and/or cross-bar and bursts, the game ends).
3. Yes.
4. The referee should award a penalty-kick because the player who handled had changed places with another player without informing the referee.

ANSWERS



If you are at HOME in Burnley  
 If you are AWAY in Burnley  
 May we DRAW your enquiries for all your  
 Printing Requirements and Commercial Stationery



**Hamilton Publications (Burnley) Limited**  
 RIBBLE WORKS      TRAFALGAR STREET · BURNLEY  
 Telephone Burnley 24066

Telephone 26500

**IVAL ENGINEERING  
 CO.**

**WATERLOO MILL**  
 Back OXFORD ROAD  
 BURNLEY

General  
 Engineers  
 and  
 Precision  
 Machinists  
 Experimental  
 Prototype  
 Work

**NEW BUNGALOWS FOR SALE AT  
 SABDEN VILLAGE**

(Burnley 5 miles, Nelson 5, Padiham 3½)

DETACHED and SEMI-DETACHED  
 with 2, 3, & 4 bedrooms; delightful rural situ-  
 ation; convenient for Schools and other ser-  
 vices; GAS CENTRAL HEATING.

Representative on site each Sunday  
 2-30 p.m. — 4-30 p.m.

Full details of the above and other proper-  
 ties for sale in the Ribble Valley area from

**F. W. L. STEELE & CO.**

Estate Agents & Valuers

1/3 CASTLE GATE, CLITHEROE. Tel. 2092

## SCHOFIELD'S OF COLNE

— FOR —

Motor Cycles, Scooters and Mopeds

B.S.A., Triumph, Honda, Suzuki, etc.

Spares and accessories for all makes.

Spares Exchange Service.

**15/17 MARKET PLACE  
 COLNE. Tel. Colne 859**

That new or used car or  
 Commercial. Guaranteed Used.

All makes at prices and terms  
 to suit your requirements.

Repairs and accessories at:

**GLEN GARAGE  
 NORTH VALLEY RD.  
 COLNE. Tel. Colne 212**

Suppliers of Felt Insulation to more than  
 50% as used by the British Car Industry

**Pressed Felt Ltd**

**SPRING GARDENS & CALDER MILLS  
 COLNE, Lancs. Telephone Colne 1550-5**

Manufacturers of  
 Needleloom Felts and Bonded Waddings

**SPACE RESERVED**

**BY**

**SPORTS PUBLICATIONS**



# BURNLEY F.C. Season 1968-69

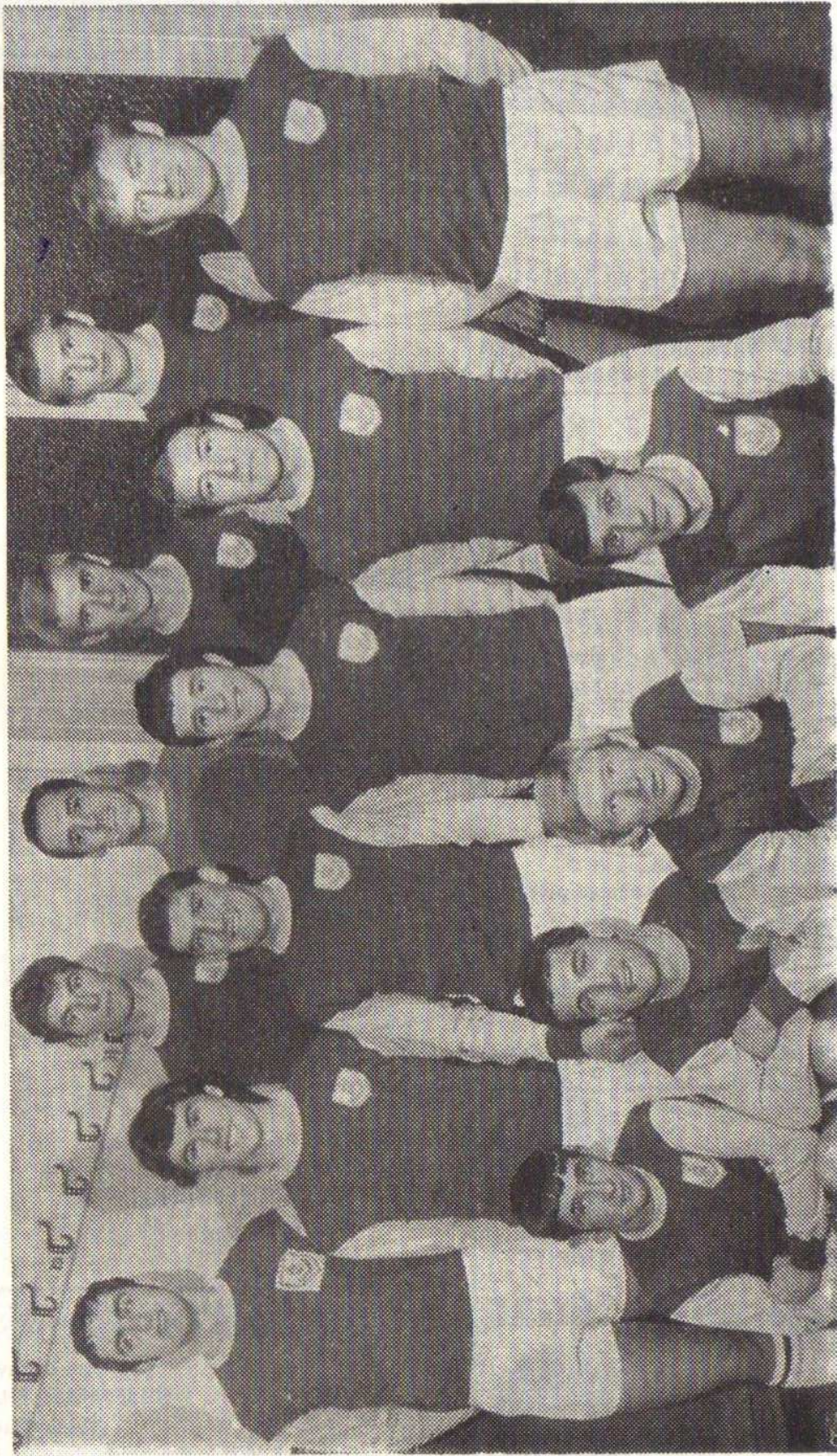


Photo: "Burnley Express"



# ALTHAMS

TRAVEL SERVICES

**ON THE BALL FOR  
ALL TRAVEL  
BOOKINGS**  
By RAIL · COACH · AIR or SEA

BOOKING OFFICES AT  
8 KEIRBY WALK, BURNLEY. Tel 27061  
- AND IN THE LANGS · YORKS AREA

Second-hand  
Car Spares  
of all  
descriptions  
supplied

Tyres

Batteries, etc.

**ALF. KYME**

Member of the M.V.D.A.

**QUARRY  
CAR DISMANTLERS**

Scrap Vehicles of all  
descriptions bought

Manager: Mr. G. PEGG

**RAKEHEAD, STACKSTEADS,  
BACUP, LANCASHIRE.**

Telephones: Bacup 953 (Day) 1064 (Night)

**HOME INTERIOR AND**

**EXTERIOR DECORATIONS**

speedily carried out at  
Burnley's most reasonable prices

**BARRIE HOBSON**

**33 LEBANON ST · BURNLEY**

Two minutes from Ground

TELEPHONE: BURNLEY 27793

**ONE PAPER  
GIVES YOU THE  
LATEST RESULTS  
AND THE BEST COMMENTARIES**

**Evening Star**

5d.

every  
night

**THIS IS MY TOWN BU  
THIS IS MY TEAM  
THIS IS MY PAPER FOR**

## BURNLEY

Colours: Claret and Blue

- 1 HARRY THOMSON
- 2 FREDDIE SMITH
- 3 LES LATCHAM
- 4 MARTIN DOBSON
- 5 COLIN WALDRON
- 6 COLIN BLANT
- 7 DAVID THOMAS
- 8 JOHN MURRAY
- 9 FRANK CASPER
- 10 RALPH COATES
- 11 STEVE KINDON

Sub

Referee:

Mr. E. T. JENNINGS,  
Stourbridge.

## SMITH & NEPHI

Makers of raw materials for  
ELASTOPLAST, LILIA, DR. WHITE

We are also manufactur

We invite anybody who is interested in  
address, and we will be only too pl



# BURNLEY EXPRESS

## LOCAL SPORTS REPORTS

### SWINDON TOWN

Colours : White and Blue.

- 1 PETER DOWNSBOROUGH
- 2 OWEN DAWSON
- 3 ROD THOMAS
- 4 JOE BUTLER
- 5 FRANK BURROWS
- 6 STAN HARLAND
- 7 DON HEATH
- 8 PETER NOBLE
- 9 JOHN SMITH
- 10 ROGER SMART
- 11 DON ROGERS

Sub

Linesmen :

Mr. W. A. Marriott (Red Flag)

Mr. F. Ellis (Yellow Flag)

### EW (TEXTILES) LTD. BRIERFIELD

or the world-famous products:

TE'S, SOUTHALL'S — DENIM CLOTHS

urers of Surgical Dressings.

In our factory to contact us at the above  
pleased to try to answer any questions.



### R. RAWLINSON & SONS LTD.

Decorators & Painting Contractors

Office and Works

371 Manchester Road - Burnley

Tel. Burnley 22313

For your Next New or Used Car  
Consult

*Rushworths*

Telephone  
21511

Rootes Group Main Dealers

QUEEN'S PARK GARAGE,  
BURNLEY

VALE SERVICE STATION,  
COLNE

Telephone 247

Why not give us a call on your way  
home ?

*after the game . . .*

*Drive home safely using  
Cooke's Quality Motor Oil,  
to a house that is warm and cosy,  
heated by Conoco Heating Oil*

SAMUEL COOKE & CO. LTD.

Stanley Street Oil Works, Burnley  
Tel. 23777, 28333 Tod. 3582

*Authorised Distributors for  
CONTINENTAL OIL (U.K.) Ltd.*

## Victory V

Lozenges

Gums

Jelly Babies

Pastilles, etc.

TOP OF EVERY DIVISION



## DEVELOPMENT ASSOCIATION NEWS

### SATURDAY DRAW — 16th November, 1968.

1. Code No. P140. R. RYLEY, 8 Castle Street, Burnley, receives £100-0-0.  
Agent: Mr. S. ROBINSON receives £15-0-0.  
15 consolation prizes at £2-10-0 each.
2. Code No. K656. S. E. RAYSON, 66 Brunswick Street, Nelson, receives £50.  
Agent: F. VICKERS receives £10-0-0.  
15 consolation prizes at £2-5-0 each.
3. Code No. E907. R. HANNAH, 34 Bankhouse Rd., Nelson, receives £25.  
Agent: N. HANNAH receives £5-0-0.  
15 consolation prizes at £2-0-0 each.

### "FREE" LUCKY HOLIDAY CRUISE NUMBERS

All letters A—P 441

All letters A—P 076

☆ DUE TO RE-ORGANISATION OF SOME BOOKS (excellent co-operation by agents) ONE OR TWO BOOKS NOW AVAILABLE FOR THIS DRAW.  
If you wish to organise a book of 25, please contact the Development Office—but you must do it quickly!

### ★ BURNLEY'S BEST BUMPER CHRISTMAS DRAW

50 PRIZES — with a top prize of £100-0-0

Cash prizes - £180-0-0 — Hampers — Turkeys — Spirits — Xmas Cakes  
Cigars. ————— Special sellers' cash prizes.

DRAW TAKES PLACE ON WEDNESDAY, 11th DECEMBER, 1968.

TICKETS — ONLY ONE SHILLING EACH!

### ★ AGENTS REQUIRED FOR No. 3 SCHEME "TREBLE CHANCE" TICKETS

If you wish to help Burnley Football Club, you can do so by selling 10 — or more — "Treble Chance" tickets every week. Contact the Development Office after the game — or ring Burnley 22720 — remember — every little helps!

### ★ THE DEVELOPMENT ASSOCIATION HAVE YOUR COMFORT IN MIND — HAVE YOU?

## THE CLARET AND BLUE SHOP

(open end of ground on Brunshaw Road)

CLUB SOUVENIRS FOR SALE — (postage not included)

Club lapel badges .....	3-0	Mascot lapel badges .....	3-0
Club ties .....	15-0	Club scarves .....	15-0
★ Programme Binders (save your programmes) .....	7-6		
Key rings .....	4-6	Car stickers .....	2-9
Airline bags .....	24-0	Duffle bags .....	16-6
★ Club pennants — now in stock this week .....	6-0		
Club cuff links .....	17-6	Colour team photographs .....	2-6
Claret and Blue Small Teddy Bears .....	21-0		
Claret and Blue Large Teddy Bears .....	35-0		
Claret and Blue Nightdress Cases .....	35-0		

ORDER NOW FOR CHRISTMAS



**SPACE RESERVED  
BY  
SPORTS PUBLICATIONS**

**BURNLEY FOOTBALL CLUB  
TICKET ARRANGEMENTS  
FOOTBALL LEAGUE CUP SEMI-FINAL — (2nd Leg)  
SWINDON TOWN  
V.  
BURNLEY**

At Swindon — Wednesday, 4th December, 1968. Kick-off 7-30 p.m.

**THIS WILL BE AN ALL TICKET MATCH**

Ticket Prices: STANDS 11/6d.; 10/6d.; 9/6d.

Enclosure: 7/- (Adults); 3/6d. (Juveniles)

Ground: 6/- (Adults); 3/- (Juveniles); 2/6d. (Pensioners)

SEASON TICKET HOLDERS can claim tickets for this match from the Secretary's Office on production of CUP-TIE SLIP No. 2 (from back of Season Ticket Book), after tonight's game and on Thursday, Friday and Saturday, from 9-15 a.m. to 12-30 p.m. and 2-15 p.m. to 5-30 p.m., and Sunday 10-30 a.m. to 11-30 a.m. as follows:

ENCLOSURE AND GROUND TICKETS will be available to all members during the above hours but STAND TICKETS will be restricted to Stand Members up till 12 noon on Saturday, and then to Enclosure and Ground Members up till 11-30 a.m. on Sunday next.

All unsold tickets will then be made available to the General Public on Sunday, 24th November, from 11-30 a.m. to 12-30 p.m., and on the following Monday, Tuesday and Wednesday from 9-15 a.m. to 12-30 p.m. and 2-15 p.m. to 5-30 p.m.

These arrangements are subject to tickets being available at the time of application.

Postal applications should contain remittance and stamped addressed envelope (and CUP-TIE SLIP No. 2 if a Season Ticket Holder).

**ANY UNSOLD TICKETS WILL BE RETURNED TO SWINDON AFTER 5-30 p.m. ON WEDNESDAY NEXT, 27th NOVEMBER, 1968.**



SPACE RESERVED  
BY  
SPORTS PUBLICATIONS

**East Lancashire Automatics Ltd.**  
(Incorporating Model Motor Works)

**Engineers and Manufacturers**

Automatic Precision Components in  
Metals & Plastics, Co-axial Plugs & Sockets  
Television, Electrical & Radio Components  
Anodised Gold Television or Table Legs  
Ace Works Gisburn Road Barrowford Nelson  
Telephone Nelson 66370

SPACE RESERVED  
BY  
SPORTS PUBLICATIONS

*Always on the ball!*

**SKIPPER**

**OXFORD RD. BURNLEY**  
**(5 minutes from Turf Moor)**

MAIN  
*Ford*  
DEALER



**FOR A  
COURTEOUS  
& EFFICIENT  
SAVINGS &  
MORTGAGE  
SERVICE**

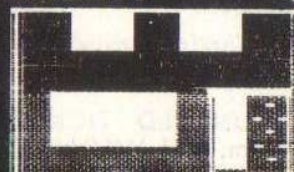
Member of the Building Societies Association  
H. R. Shoesmith, F.B.S. General Manager

**BOROUGH**

**BUILDING  
SOCIETY**

Est 1874

Savings—6d to £5,000 received.  
Advantageous Mortgage Terms  
Assets £33,000,000  
Reserves £1,800,000



Please call or write **PARKER LANE, BURNLEY, Tel 22021**



# SWINDON TOWN F.C.

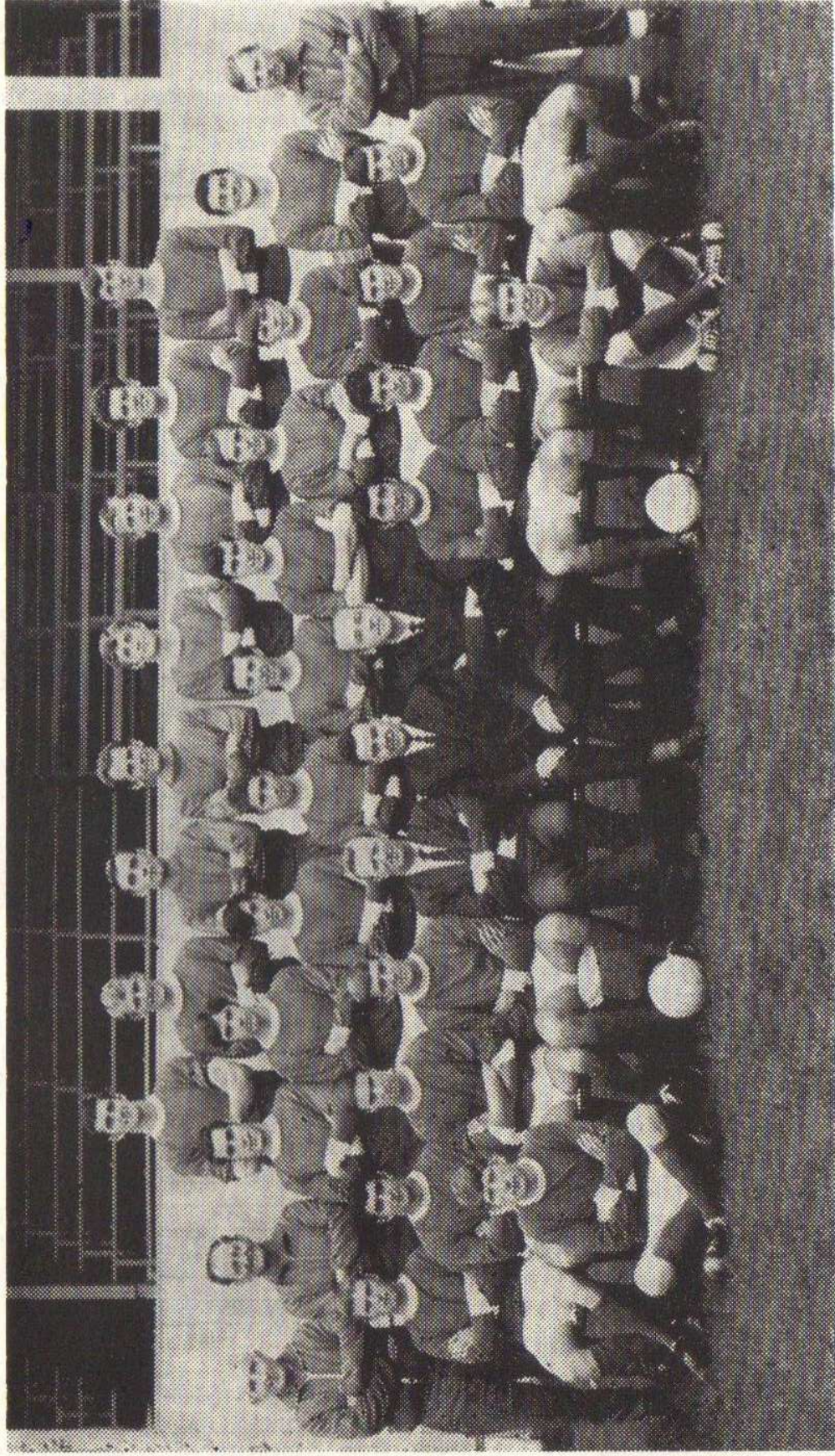


Photo: Maylott Studios Ltd., Swindon



## *Our Visitors:*

### **SWINDON TOWN**

F.C.

#### **PETER DOWNSBOROUGH (Goalkeeper)**

Born Halifax. Signed in August, 1965, from Halifax Town, where he was a product of local football. A fearless, agile player who has done much to strengthen the Town's defence. Height 5 ft. 10½ ins. Weight 13 st. 2 lbs.

#### **OWEN DAWSON (Right-back)**

Born Hatfield. Joined the Club from Portsmouth in June, 1962. He was a regular 1st team player until he was unlucky enough to lose his place through injury. A fast tenacious player. He was a former Youth international. Height 5 ft. 9½ ins. Weight 11 st. 12 lbs.

#### **ROD THOMAS (Full-back)**

Born Glyncorrwg. A former youth player with the Club. He was signed from Gloucester City in July, 1964. Took over the full-back position last season when Owen Dawson was injured, and maintained his position throughout the season. Has gained Welsh Under-23 Caps and Full Welsh Caps. Height 6 ft. Weight 12 st. 10 lbs.

#### **JOE BUTLER (Full-back)**

Born Newcastle. Joined Swindon from Newcastle United in August, 1965, where he graduated to the senior ranks through the Club's Junior Team. A tenacious player whose speed and ability amply make up for his lack of inches. Height 5 ft. 7½ ins. Weight 11 st.

#### **ROGER SMART (Right-half or inside-for'd)**

Born Swindon. Another local player who joined the Club direct from Swindon Schoolboys Team. At 17 he was appearing regularly at centre-forward in the Reserve Team, but he excels as a deep lying inside-forward. A versatile player who is able to play at wing-half. Height 5 ft. 11½ ins. Weight 12 st. 11 lbs.

#### **FRANK BURROWS (Centre-half)**

Born Larkhall, Scotland. Joined the Club from Scunthorpe United for whom he played three seasons. Formerly with Raith Rovers. A strong defender who has made his mark in Third Division football. Height 6 ft. 1 ins. Weight 12 st. 8 lbs.

#### **STAN HARLAND (Left-half)**

Born Liverpool. Was signed from Carlisle United in July, 1966. Formerly with Everton and Bradford City. He has been a regular choice at left-half since making his debut at the beginning of the 1966/67 season. A forceful player who likes to go forward to back up the forwards in attack. Height 6 ft. Weight 12 st. 5 lbs.

#### **DON ROGERS (Outside-right or left)**

Born Paulton. Probably the most sought after player in the team. He was signed by Swindon when only 15 and quickly came to the fore. Gained many England Youth International Caps and subsequently played in the England Under-23 International Team. Was the Club's top goal scorer last season with 28 goals. Height 5 ft. 10½ ins. Weight 12 st. 10 lbs.

#### **DON HEATH (Outside-right)**

Born Stockton. Signed from Norwich in September, 1967. Formerly with Middlesbrough, where he served as an apprentice professional. A hard working winger who is also able to play in the inside-forward position. Height 5 ft. 8 ins. Weight 11 st. 8 lbs.

#### **WILLIE PENMAN (Inside-forward)**

Born Wemyss, Fife. Signed from Newcastle United in September, 1966, for a considerable fee. Formerly with Glasgow Rangers. A clever ball playing inside-forward who has also appeared at centre-forward with the Club. Height 5 ft. 8 ins. Weight 10 st. 10 lbs.

#### **PETER NOBLE (Inside-forward)**

Born Sunderland. Joined the Club from Newcastle in January, 1968, for whom he played for four years. Prefers to play an attacking role. Height 5 ft. 8 ins. Weight 10 st. 10 lbs.

#### **JOHN SMITH (Inside-forward)**

Born London. Signed from Torquay United in June, 1968, and previously played for Leyton Orient, West Ham United, Tottenham Hotspur and Coventry. Former England Under-23 International. Height 5 ft. 8 ins. Weight 13 st.

#### **CHRIS JONES (Centre-forward)**

Born Altrincham. A close season signing from Manchester City, for which club he played in their touring team in America. Height 5 ft. 11 ins. Weight 11 st. 12 lbs.



SPACE RESERVED  
BY  
SPORTS PUBLICATIONS

**D. KITCHEN LTD.**

COLNE



DISTRIBUTORS



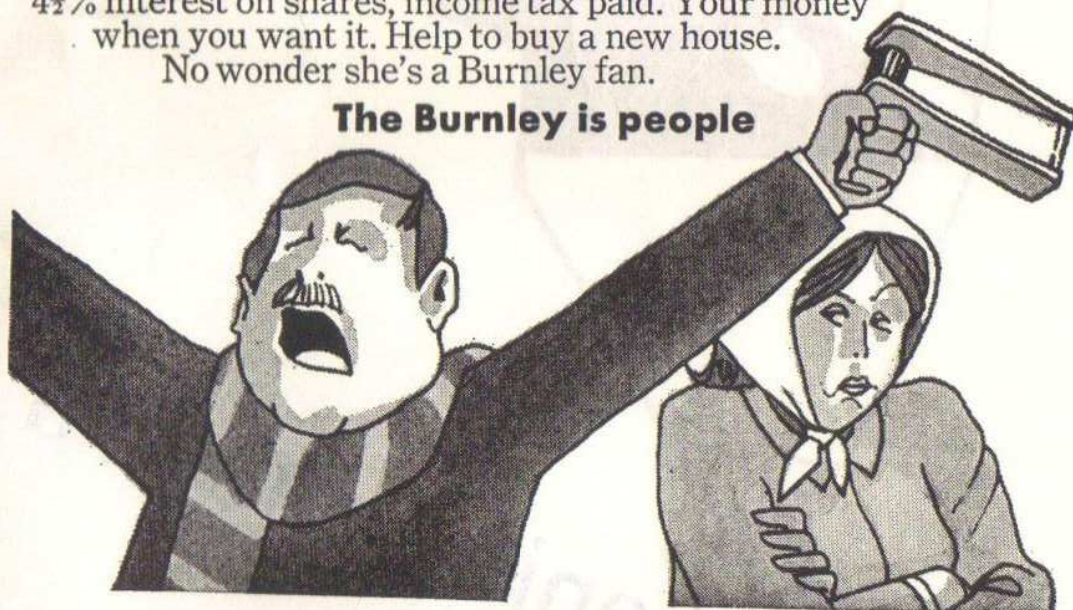
MORRIS & WOLSELEY DEALERS  
B M C SPARES & SERVICE

NEW & USED CARS  
ALWAYS IN STOCK  
SERVICE 404 :: SALES 405

## Mrs Albert Yardley hates football. But she's always been a Burnley fan.

She knows Burnley's a winner everytime.  
4½% interest on shares, income tax paid. Your money  
when you want it. Help to buy a new house.  
No wonder she's a Burnley fan.

**The Burnley is people**



**Burnley Building Society**

Member of the Building Societies Association



Contact me for  
Stone Painting, Slating, Joinery Work,  
Doors, Windows, etc.  
Building, Plastering, Cementing.  
We tackle most jobs  
All Property Repairs, Conversions

**G. KIRKHAM**

**18 Burdett Street**

**Burnley**

**ESTIMATES FREE**

**Telephone 28919**



---

Before or after . . .



enjoy one in a



**MASSEY** House

---